

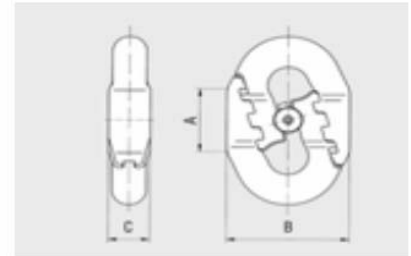
PTS INDUSTRIAL – CHAIN CONNECTORS

FL flat connector

For use in single and multi-strand conveyors.
Runs over sprocket wheels, grooved wheels and flat guide wheels.

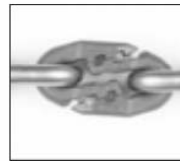
Advantages / benefits

- Overall dimensions approx. same as those of chain link
- Simple assembly with a hammer
- Extremely wear-resistant



Chain dxt in mm	A	B	C	kg/item
22x86	58	77	26	1,2
26x100	62	89	29	1,8
30x120	70	107	36	2,9
34x136	82	117	40	4,3
38x144	95	133	45	5,8

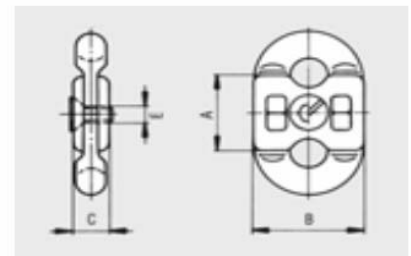
Dimensions in mm



RS chain connector, space-saving, for use in single and multi-strand conveyors.
Runs over sprocket wheels, grooved wheels and flat guide wheels.

Advantages / benefits

- Overall dimensions same as those of chain link



Chain dxt in mm	A	B	C	E	kg/item
19x75	51	66,5	23	M 12	0,8

Dimensions in mm